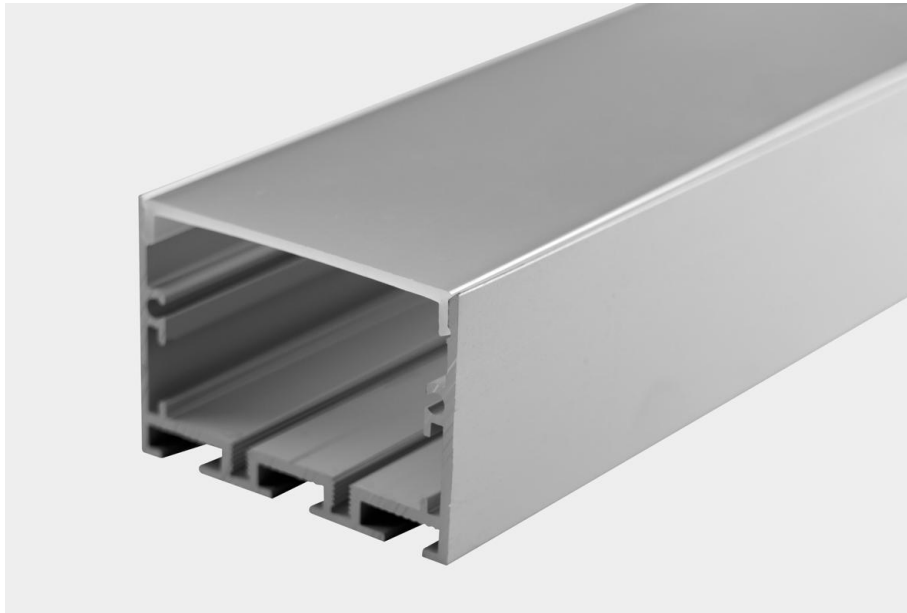


Product Specifications

Name: Architectural Aluminum LED Profile surface mounted or suspended mounted

Model No.: SJ-ALP5035



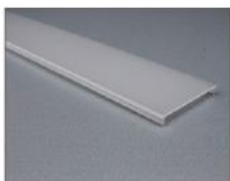
Product characteristics:

The extrusion is made from high quality Aviation 6063-T5 aluminum alloy with Double-Anodized, and is designed for flexible or rigid LED strips that are 40mm wide. One of the accessories offered for the extrusion are covers that shade and protect LEDs inside the profile. Covers are made of polycarbonate and are certified for excellent resistance to all weather conditions and UV radiation, as well as being flame retardant. Standard Aluminum end caps are used for the extrusion as supplementary accessories. End caps protect the extrusion from dust and other undesirable elements, which can make LED strips dirty and consequently deteriorate the lighting parameters. The extrusion can be mounted to surfaces with mounting screws and also Suspended mounted with steel cables.

Products related to the Extrusion:



Aluminum Channel



PC Cover



End Caps

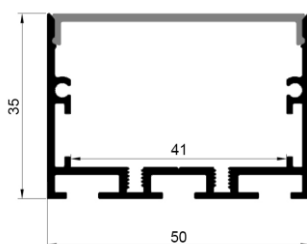


Steel Cables



Straight Connector

Dimensions Drawing:



Technical specifications:

Ingress Protection Rating:	IP20 (standard)
Available lengths:	1m / 2m/3m (can be cut to any size)
Material:	Body – aluminum, cover – polycarbonate (PC), end cap – Aluminum,
Lighting Transmittance:	Frosted Cover, 70-90%;
Operating temperature range:	-30~+100°C
Flammability:	V2 Fire Rating for PC Cover.
UV stability:	Ageing resistance more than 3 years.
Heat stability:	Under 100°C.
UL94 rating:	UL94V2
Manufacturing tolerances:	±0.5mm.
Grade of aluminum:	6063-T5
Grade/Type of anodizing:	Ecru oxidation and Grind arenaceous oxidation
Heat transmission properties:	Aluminum specific heat is 0.88x10J/(Kg x °C)

Applications:

The extrusion with LED light source is mostly used as interior lighting, commercial lighting, architectural lighting. especially to light stairs, glass-cases, or as a decoration light for a niche in drywall ceilings.

