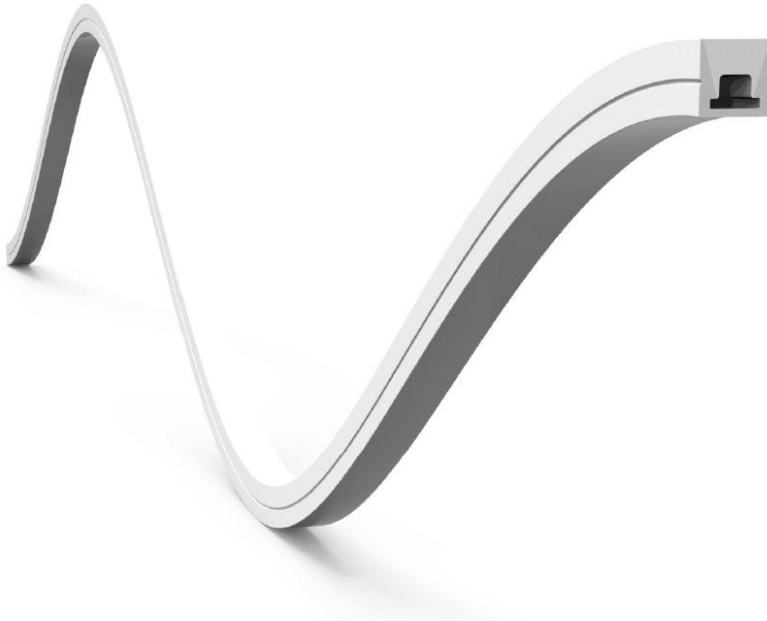


Product Specification

Name: Flexible Silicone LED Profile.

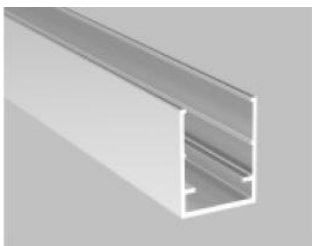
Model No.: SJ-ALP1616F



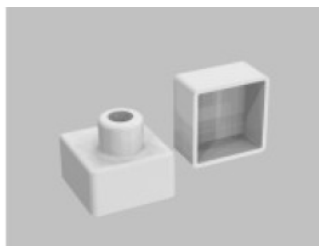
Product characteristics:

The extrusion is made from high quality Silicone, and is designed for flexible LED strips that are 8 - 11mm wide. Standard Silicone soft end caps and aluminum mounting clips are used for the extrusion as supplementary accessories. End caps protect the extrusion from dust and other undesirable elements, which can make LED strips dirty and consequently deteriorate the lighting parameters. The extrusion can be mounted to surfaces with the use of double-sided adhesive tape or mounting brackets. The mounting bracket guarantees easy and secure mounting of the extrusion to a desired surface. It can also be used as a connector between extrusions.

Products related to the Extrusion:



Alu profile for fixing

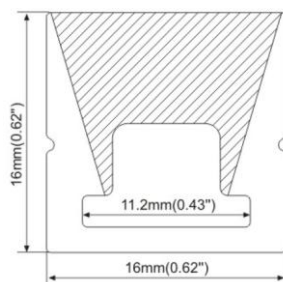


Silicone end caps



Aluminum mounting clip

Dimension Drawing:



Technical specification:

Ingress Protection Rating:	IP67
Available lengths:	0.5-3.0m (can be customized)
Material:	Body – Silicone tube, end cap –silicone, mounting bracket-aluminum
Lighting Transmittance:	Opal Cover, 50%.
Operating temperature range:	-30~+100°C
UV stability:	Ageing resistance more than 3 years.
Heat stability:	Under 100°C.
Manufacturing tolerances:	±0.5mm.

Applications:

The extrusion with LED light source is mostly used as interior lighting, **curved lighting** for display counter.

